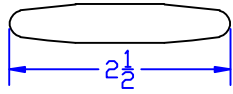


BT Moulding

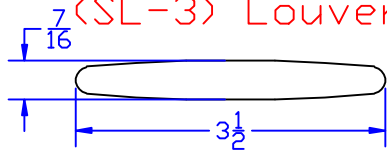
Shutter Parts

Stocking in Basswood

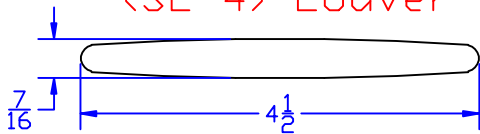
(SL-2) Louver



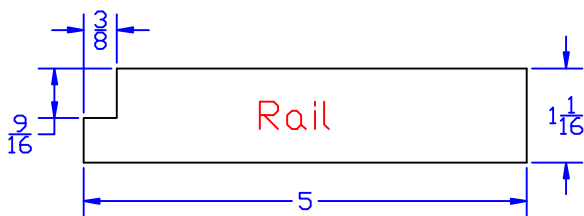
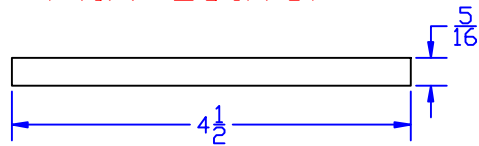
(SL-3) Louver



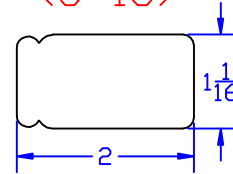
(SL-4) Louver



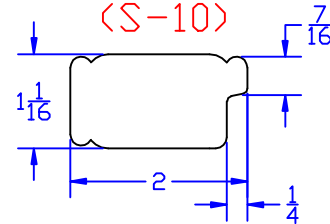
DM 5/16 x 4-1/2
Flat Louver



(S-15)

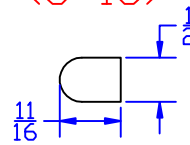


(S-10)



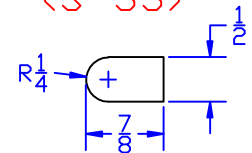
Tilt Rod

(S-18)

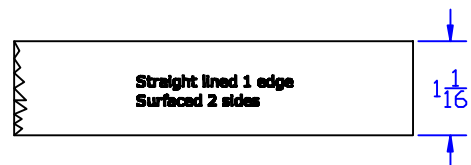


Tilt Rod

(S-33)



(1-1/16") S2S1E Lumber



(3/4") S2S1E Lumber



Shutter Parts

Stocking in Basswood

